

FIRE/EMS RESPONDERS' PERSPECTIVE



Dr. Hezedeane A. Smith, CFO, EFO, CEMSO, CPM, CHSE, FACPE, MIFireE

Hosted by National Alliance for Public Safety GIS (NAPSG) Foundation

napsfoundation.org | [@napsfoundation](https://twitter.com/napsfoundation)

November 13, 2019

WHAT IS ALL THIS BUZZ ABOUT?

What Kind of Data?

QUANTITATIVE



QUALITATIVE

BACKGROUND

- 48 months of service USAF
- Emergency services – 31 years
- 23 years, 7 months – Orlando Fire Department
- Migrated to the United States from JA

- Happy to be here (Affect)
- The conversations (Affect)
- Best conference this year (Belief)
- Plan to attend in 2020 (Behavior)

QUANTITATIVE

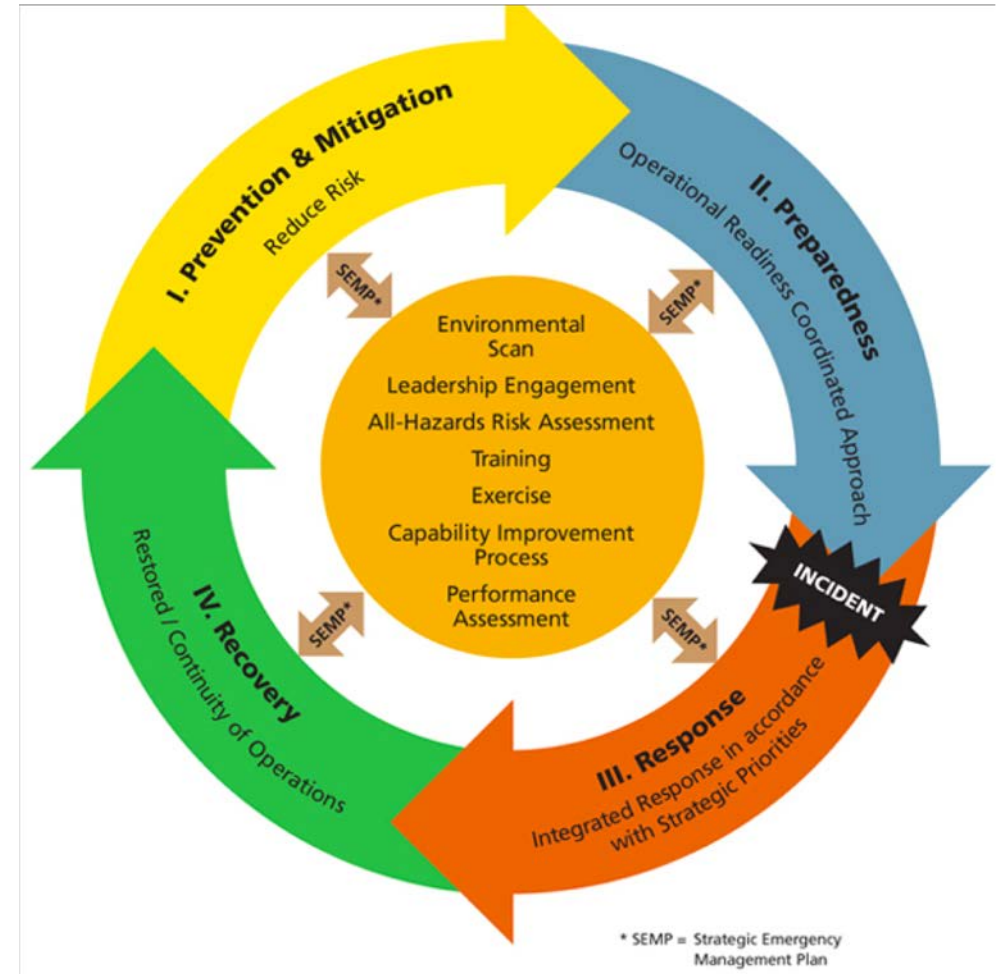


QUALITATIVE

WHY USE WE NEED DATA?

PURPOSE (Mixed-Methods)

RESPONSE



USES OF DATA

- Strategic (Prospective)
- Concurrent (Operational)
- Retrospective (Planning)



- Is it the lack of, or is it misused/not used?
- Is it too much?

VISION

ALIGNMENT

EXECUTION

RESPONDER LEVEL DATA – BARRIERS OR CONTRIBUTORS



IP CAMERAS, DRONES,
CROWD SOURCED

ROLE OF TECHNOLOGY

Integration



- Multi-disciplinary



napsfoundation.org | [@napsfoundation](https://twitter.com/napsfoundation)



WHEN IS IT TOO MUCH?

REDUNDANCY



Vulnerability
Just Ahead

BARRIERS TO POLICIES



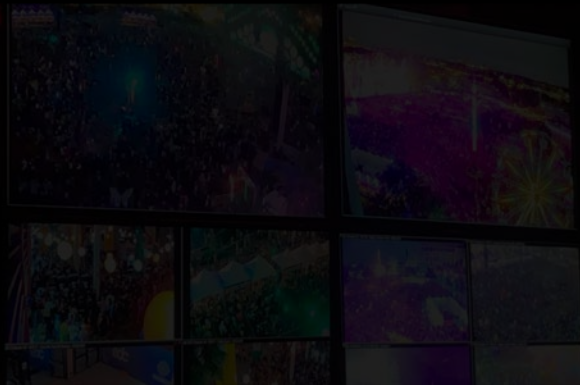
- Value (before or after..)
- Interagency agreements
- Credentialing processes
- Technical agreements

AGREEMENTS

- Real Time Traffic Signal Data with Vendors
- Permits
- City of Orlando & FDOT
 - Automated Vehicle (Partnership)
- Interlocal Agreements
 - Tri-County (Orange, Osceola, Seminole)



Case Study



BACKGROUND

- Electric Daisy Carnival, commonly known as **EDC**, is an annual electronic dance music festival, with its flagship event held annually in Las Vegas, Nevada. ...
- 2016 – 70,000 attendees each day x2 days
- 2018 – 50,000 attendees
- 2019 – 75,000 attendees each day x3 days



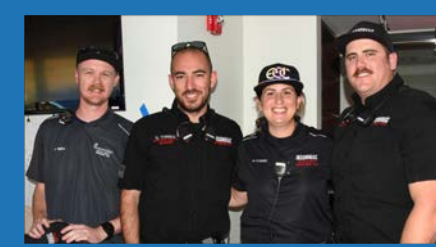
via Electric Daisy Carnival - EDC Orlando/Facebook

UNIFIED COMMAND POST

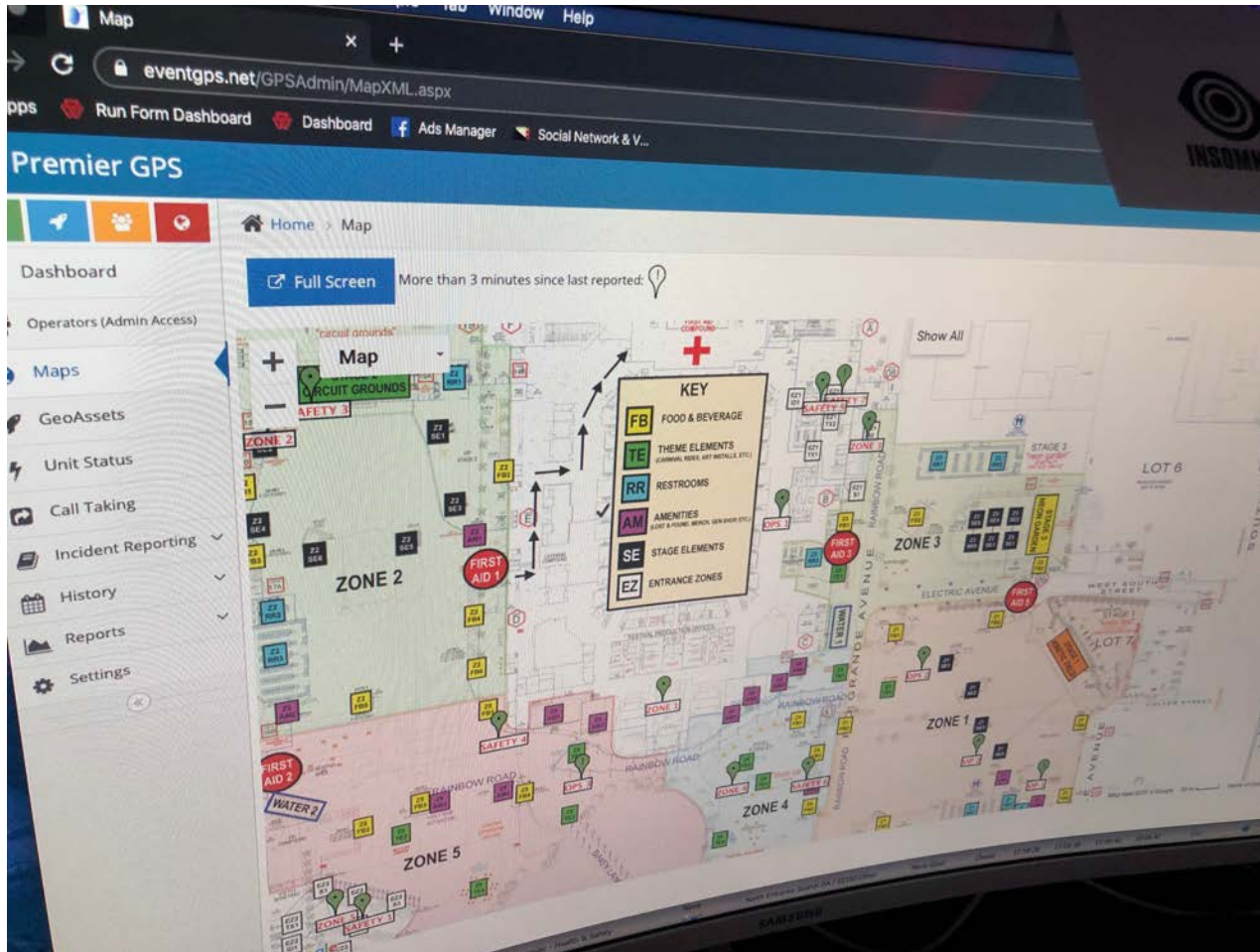


KEY STAKEHOLDERS

- EDC Organizers
- City Staff
- Senior Staff – OFD & OPD
- OFD Event Coordinator
- OFD & OPD Personnel
- Local Hospitals
- Office of Medical Directors
- Emergency Operations Center (EM)
- AMR (EMS providers)
- Central Florida Disaster Management Team



SOURCES OF DATA – GIS & IP CAMERAS



SOURCES OF DATA – HOSPITAL CAPABILITIES

EMResource | Orlando Fire Department MDT's (ofdmtd) | Florida RDSTF 5 | Log Out | Search

Setup View Event Preferences Form Report Regional Info IM

Orange Co ED View show map

SITUATIONAL AWARENESS ALERT

Orange County	ED Status	E.D. Saturation	Hospital Status/Saturation
OH ARNOLD PALMER MEDICAL CENTER	1. Open	--	1. Open/Green
OH DR P PHILLIPS HOSPITAL	1. Open	--	1. Open/Green
AH APOPKA	1. Open	--	1. Open/Green
AH EAST ORLANDO	1. Open	17	1. Open/Green
AH ORLANDO	1. Open	105	1. Open/Green
AH ORLANDO (PEDIATRICS)	1. Open	--	1. Open/Green
AH WINTER GARDEN	1. Open	--	N/A
OH HEALTH CENTRAL	1. Open	--	1. Open/Green
HCA HUNTER'S CREEK Stand Alone ED	1. Open	--	N/A
NEMOURS CHILDREN'S HOSPITAL	1. Open	84	1. Open/Green
OH ORLANDO REGIONAL MEDICAL CENTER	1. Open	109	1. Open/Green
AH WINTER PARK	1. Open	32	1. Open/Green
VETERANS HOSPITAL	1. Open	--	1. Open/Green
OH HORIZON'S WEST Stand Alone ED	1. Open	--	N/A
AH 4-CORNERS Stand Alone ED	1. Open	0	N/A
HCA BALDWIN PARK Stand Alone ED	1. Open	--	N/A
HCA-MILLENIA Stand Alone ED	1. Open	3	N/A
AH - WATERFORD LAKES Stand Alone ED	1. Open	45	N/A

SOURCES OF DATA – CAD & AVL MONITORING

Apparatus Status Monitor CH09Secondary Locat

Unit Status F1

Current Call F2

Mapping F3

Location History F4

PrePlan Search F5

Call List F6

Call Search F7

Utilities F8

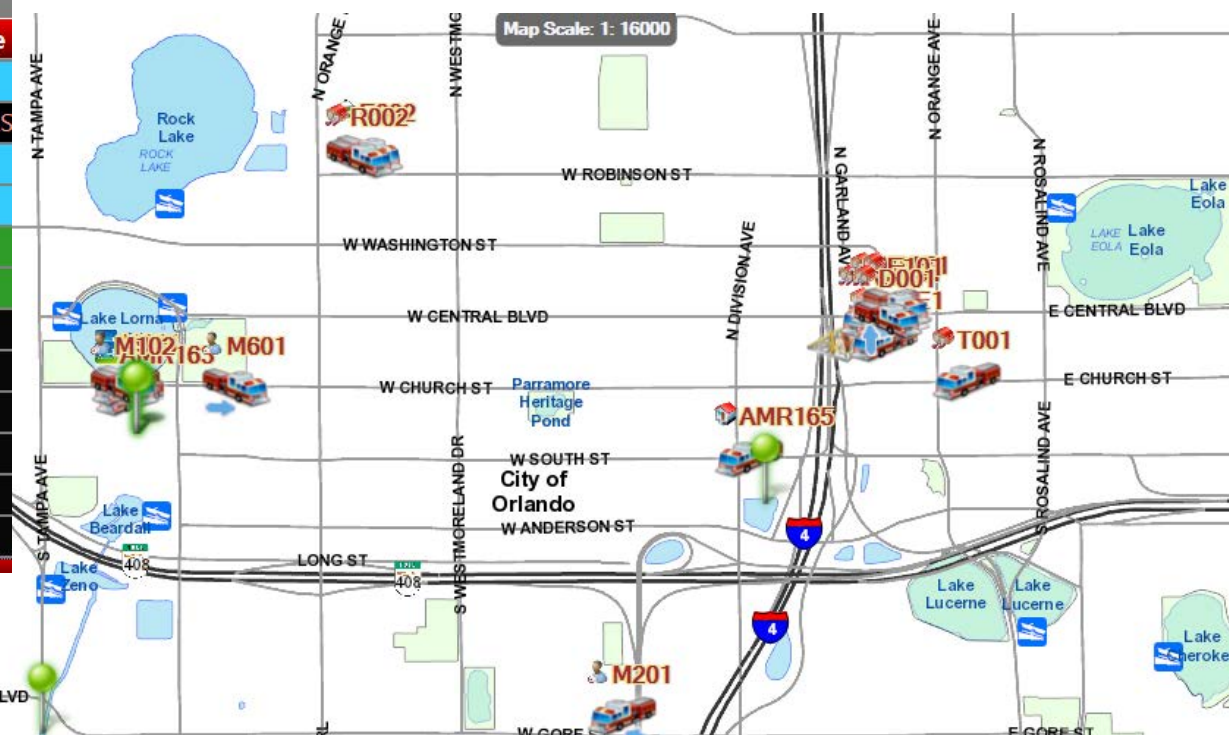
Grid Settings

2: CH09

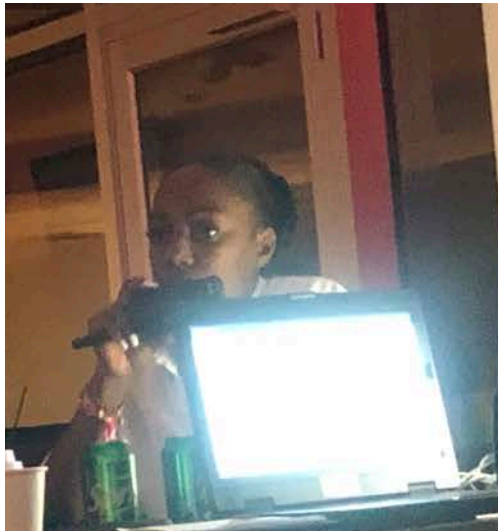
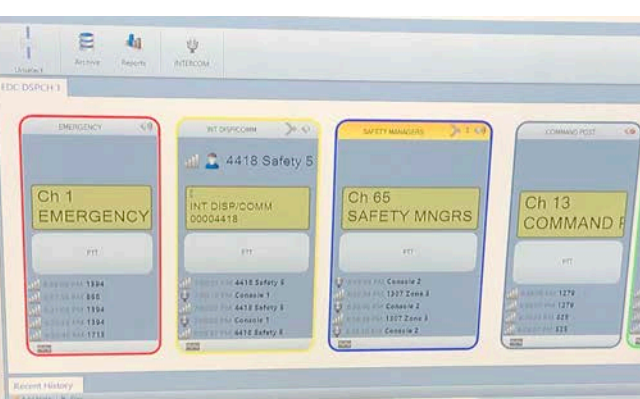
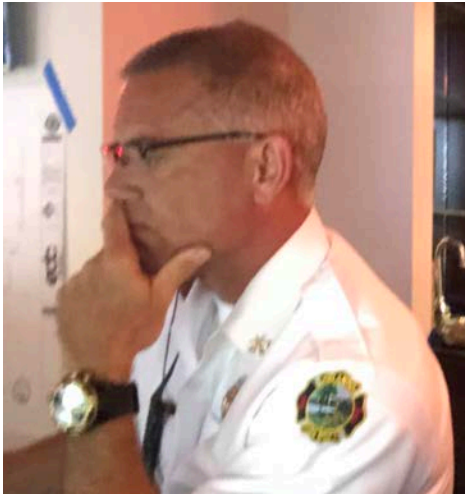
Viewing 197 of 356 units' status returned from dispatch at 23:42:36.

Drag a column header here to group by that column.

Apparatus	Date/Time	Status	Call Location	Call Type
M601	11/09/2019 23:39:43	OFF DUTY EVENTS		
M901	11/09/2019 23:37:52	TRANSPORT	1610 W CHURCH ST, Orlando	SICK PERS
M902	11/09/2019 23:40:02	OFF DUTY EVENTS		
M903	11/09/2019 22:59:32	OFF DUTY EVENTS		
MCU1	09/10/2019 16:59:28	IN QUARTERS		
MCU2	08/20/2019 06:26:55	IN QUARTERS		
MED1	08/20/2019 05:11:15	AVAILABLE		
MED2	08/20/2019 05:11:15	AVAILABLE		
MED3	08/20/2019 05:11:15	AVAILABLE		
MED4	08/20/2019 05:11:15	AVAILABLE		
MED5	08/20/2019 05:11:15	AVAILABLE		
MED6	08/20/2019 05:11:15	AVAILABLE		



SOURCES OF INFORMATION – EYES & EARS



SOURCES OF DATA – SEPARATE TRACKING

Saturday EDC 2019 Commander Workbook Macro.xlsm

Open with

	A	B	C	D	E	F	G
1	Start	Time	Patient Contact	Division	Location /Branch / Stage	UPI Id #	Nature
134	TRUE	10:43:11 PM	TRUE	EAST DIVISION	NEON GARDEN (ORL-7)	95540	ETOH
135	TRUE	10:44:54 PM	TRUE	EAST DIVISION	STEREOBLOOM (ORL-5)	95551	SEIZURES
136	TRUE	10:47:05 PM	TRUE	WEST DIVISION	CIRCUIT GROUNDS (ORL-2)	95425	OVERDOSE
137	TRUE	10:49:44 PM	FALSE	EAST DIVISION	NEON GARDEN (ORL-7)	N/A	LOC / AMS
138	TRUE	10:54:12 PM	TRUE	EAST DIVISION	KINETIC FIELD (ORL-4)	90241	ETOH
139	TRUE	10:55:07 PM	TRUE	EAST DIVISION	STEREOBLOOM (ORL-5)	95125	ANXIETY
140	TRUE	10:55:36 PM	TRUE	EAST DIVISION	KINETIC FIELD (ORL-4)	90103	DEHYDRATION
141	TRUE	10:56:30 PM	TRUE	EAST DIVISION	STEREOBLOOM (ORL-5)	95132	OVERDOSE
142	TRUE	11:01:52 PM	TRUE	EAST DIVISION	NEON GARDEN (ORL-7)	95064	LOC / AMS
143	TRUE	11:05:22 PM	TRUE	WEST DIVISION	CIRCUIT GROUNDS (ORL-2)	55651	TRAUMA

24/7

HomeIMS

Dispatch Queue

EDC Orlando - Day 1Incident TypeIncidents Reported by Event (Past 30 Days)Save Chart

P2 - Intoxicated / ETOH	20
P1 - ALOC / Altered Mental Sta...	8
Miscellaneous (Insomniac Secur...	8
Fence Problem	6
Missing Guard	6
Miscellaneous	6
Fencing Issue / Request	5
Test Incident	3
Equipment Issue/Request	3



Camping World Stadium (Tinker Field)EDC Orlando - Day 2

IncidentHotSpotNotepad

Start typing to create an incident...

Assigned To

Notes

Dispatc...On SceneClosedIncident

Incident Location...Location Detail...

Specific Location (i)Another Location

Reported Via...

Reporting Party...

Additional DetailsLink ToSave

Device

Time	Incident Type	Device	Location
No Record Found			

Powered by 24/7 SoftwareIncident Queue [2/185]

#	Incident Type	Department	Assigned To	Incident Location	Created By	Report Ti...	Dispatched	On Scene	Closed	Link	Edit
0177	P1 - Unknown Medical Aid	Insomniac - Health & Safety	OFD Orlando Fire, Safety 4	Zone 2 - Stage 2 Z2SE2/Other	Cody Snow	23:26:42	23:27:33			Link	
0182	P1 - Unknown Medical Aid	Insomniac - Health & Safety	OFD Orlando Fire, ZONE 2	Zone 2 - Stage 2 Z2SES/Other	Alexander Temple	23:32:04	23:33:19	23:38:06		Link	

SOURCES OF DATA



SOURCES OF DATA



D



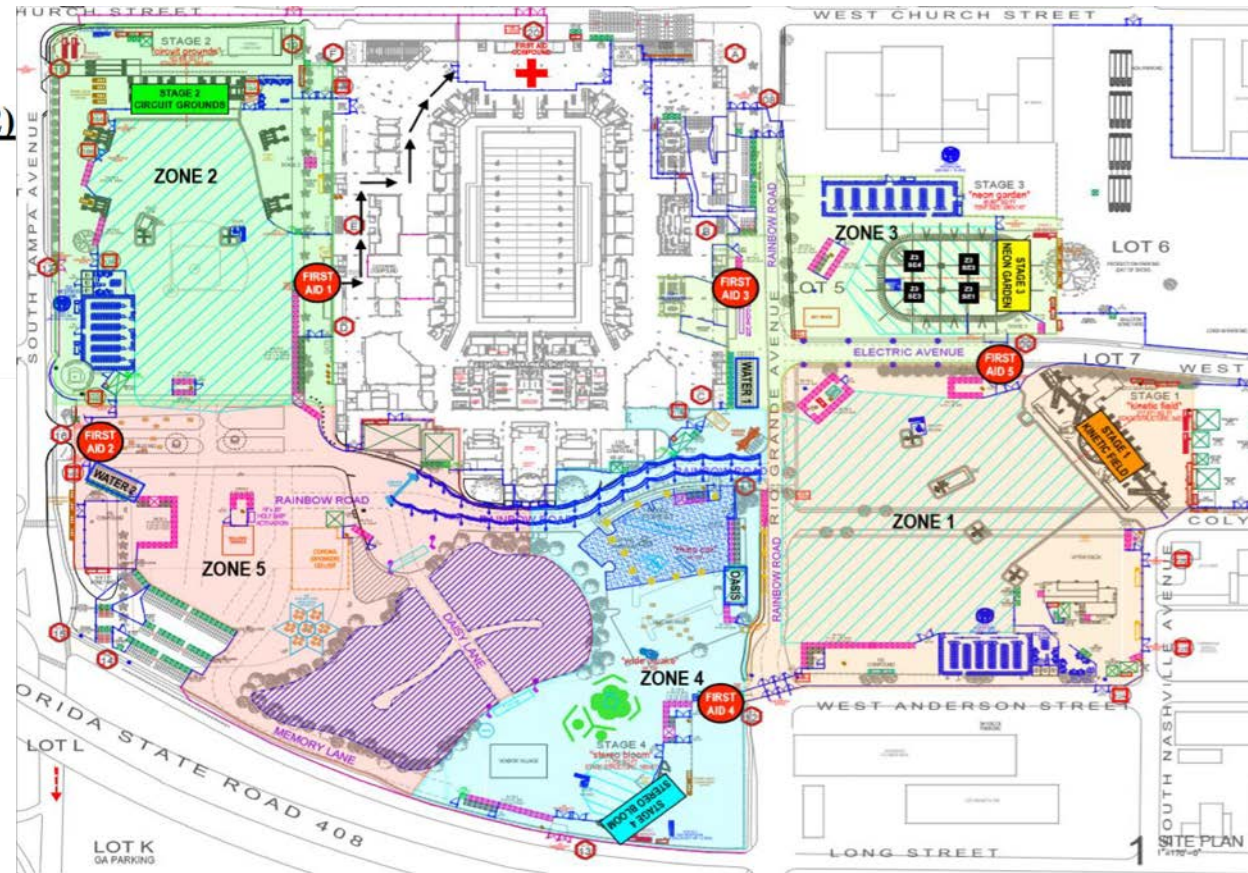
E



C

COMMUNICATIONS - AGREEMENTS

- OPS / TRANSPORT DIVISION / SEDATION TEAMS – ZONE 1 – (OFD 7)
- KINETIC FIELD / STEREOBLOOM DIVISION – (ORL 4)
- NEON GARDEN DIVISION – (ORL5)
- CIRCUIT GROUND DIVISION – (ORL2)
- RAINBOW ROAD DIVISION – (ORL3)
- LOGISTICS DIVISION – (ORL 6)



OUTCOMES & SUMMARY



ACTIVITY SUMMARY	EMS Calls for Service	Field Hospital	Field Sedations	AMR Transport Total	OFD Transport Total	Overall Transport Totals
Friday, November 8, 2019	106	105	7	17	6	23
Saturday, November 9, 2019	163	129	13	16	15	31
Sunday, November 10, 2019	138	134	2	24	11	35
TOTALS	407	368		57	32	89
	Cardiac Arrests	Intubation	Dunk Tank (Ice)	AMR Units	PMO & Medic Units	
	0	2	1	4- - 5 per night	4 - 5 per night	
STAFFING SUMMARY						
Attending Physicians	Residents (MDs)	EMS Students	Registered Nurses	Volunteers	Disaster Coalition	OFD Personnel
15 x 35 shifts x 3 days	35 x 44 shifts x 3 days	Multiple	Multiple	Multiple	Multiple members	Multiple

OPPORTUNITIES FOR IMPROVEMENT

- Patient tracking process field contact vs. mobile hospital vs. to ER [attendee armbands]
- UPI #s and other information [manually entries]
- Lack of GPS for EMS providers [EDC ground control staff had pocket held devices]
- AVL on transport units [no geofence to change status on CAD upon return to staging]
- No SIT-REP available to on-duty shift commander or Senior Staff [remotely]
- GIS means map and data points for most first responder [need change in mindset]
- ESRI, WebEOC, ArcGIS, HotSpots, Integration with boots on the ground, etc.
- Early notification process for field hospital and video-conference as needed by field



Dr. Hezedeane A. Smith

Contact: hezedeane.smith@cityoforlando.net

Global Emergency Services Consulting Group

Email: hsmith@gescg.org | Phone: 321-332-2331



Emergency Care at a Music Festival: A First-Person Report

<https://www.mdedge.com/emergencymedicine/article/139486/disaster-preparedness/emergency-care-music-festival-first-person>

MDedge | Emergency Medicine

Keeping you informed. Saving you time.

Thank you!

npsfoundation.org | [@npsfoundation](https://twitter.com/npsfoundation)